



WILD BULL

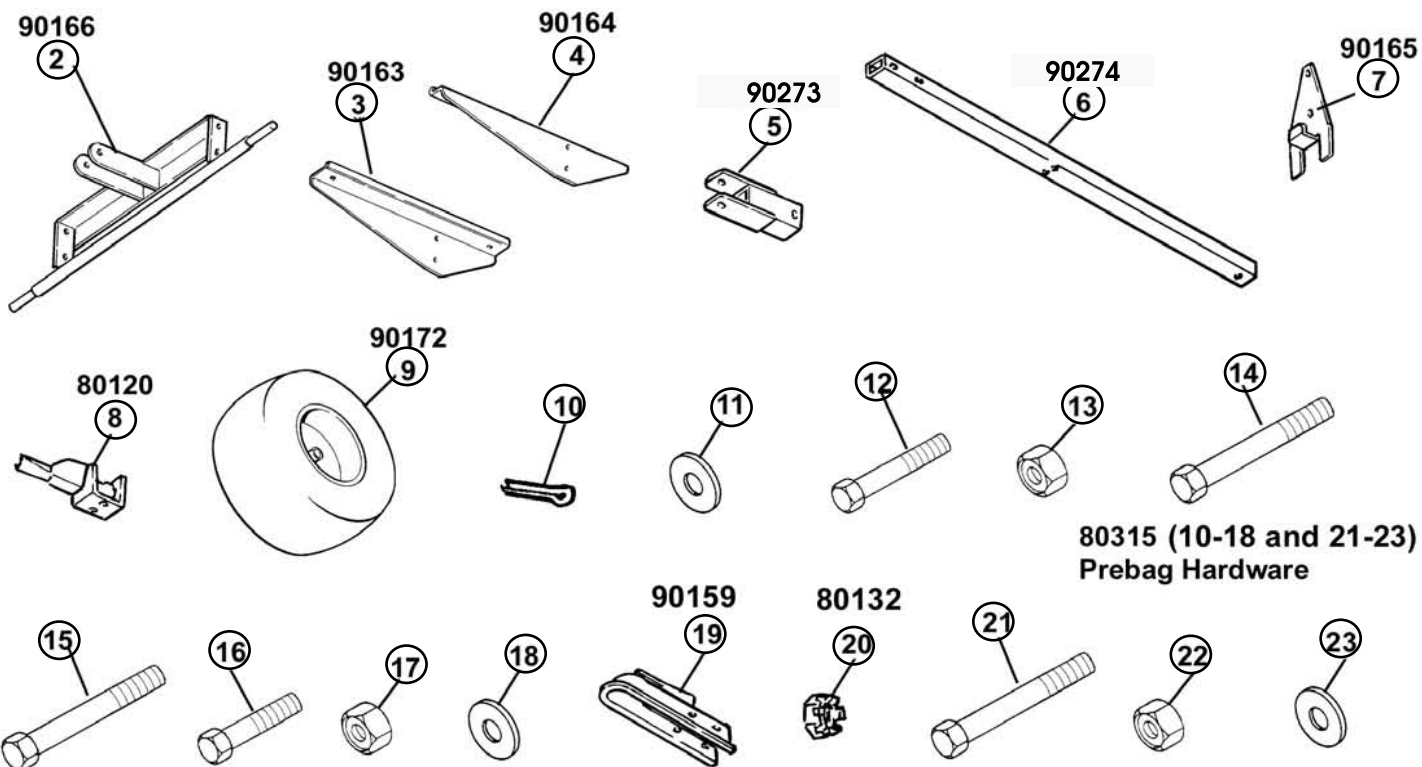
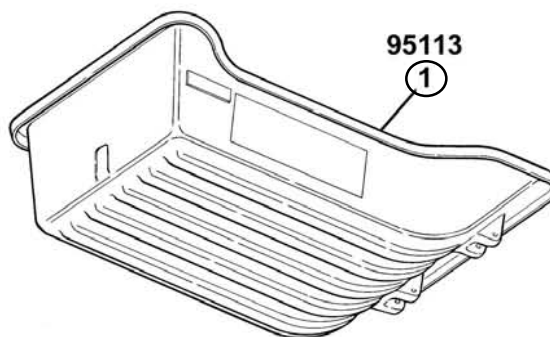
Installation & Set-Up Instructions

PARTS LIST

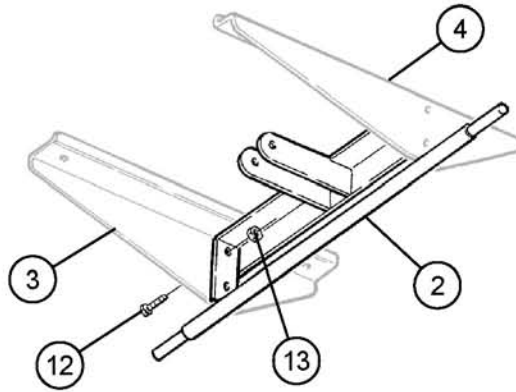
Item #	Qty	Description
1	1	Trailer
2	1	Axle
3	1	Axle Bracket - Right
4	1	Axle Bracket - Left
5	1	Universal Pivot
6	1	Tongue 39.5"
7	1	Tipper Latch Bracket
8	1	Tipper Latch
9	2	Wheel
10	2	Cotter Pin
11	4	5/16 Washer
12	6	3/8 x 1 Bolt
13	10	3/8 Nylon Lock Nut
14	3	3/8 x 3" Bolt
15	1	3/8 x 3 1/4 Bolt
16	4	5/16 x 1 1/4 Bolt
17	4	5/16 Nylon Lock Nut
18	2	3/8 Washer
19	1	Coupler, 2" Ball
20	2	Castle Nut
21	2	7/16 x 3 1/4 Bolt
22	4	7/16 Washer
23	2	7/16 Nylon Lock Nut

Tools Required:

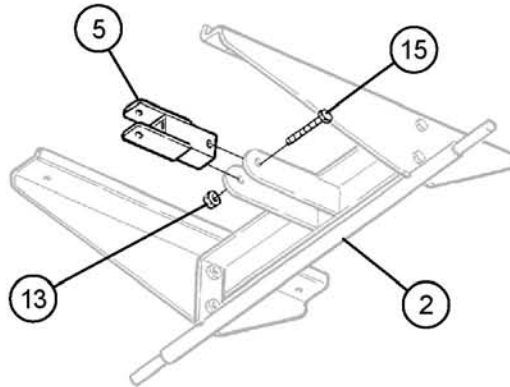
Adjustable Crescent Wrench
 9/16 Socket and Ratchet
 5/8 Socket and Ratchet
 3/8 Bit
 Drill



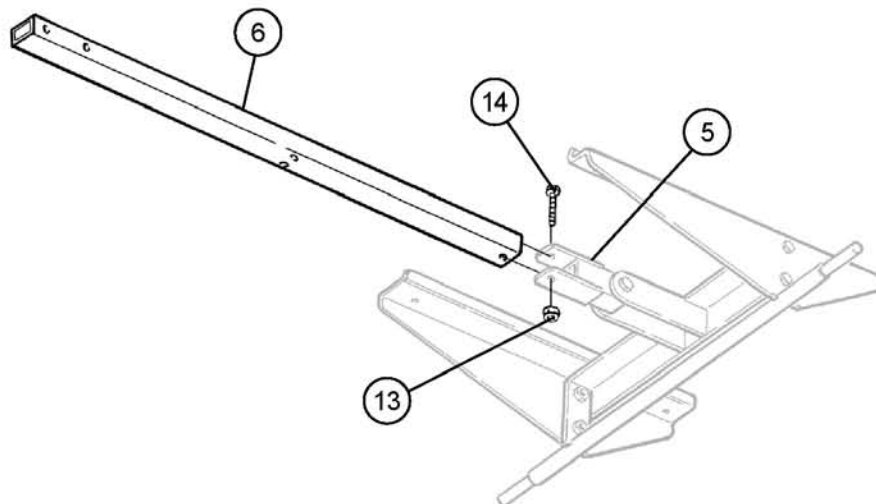
1. Attach the right bracket (Item 3) and the left bracket (Item 4) to the axle (Item 2) with 3/8 x 1 bolt (Item 12) and 3/8 nylon lock nut (Item 13).



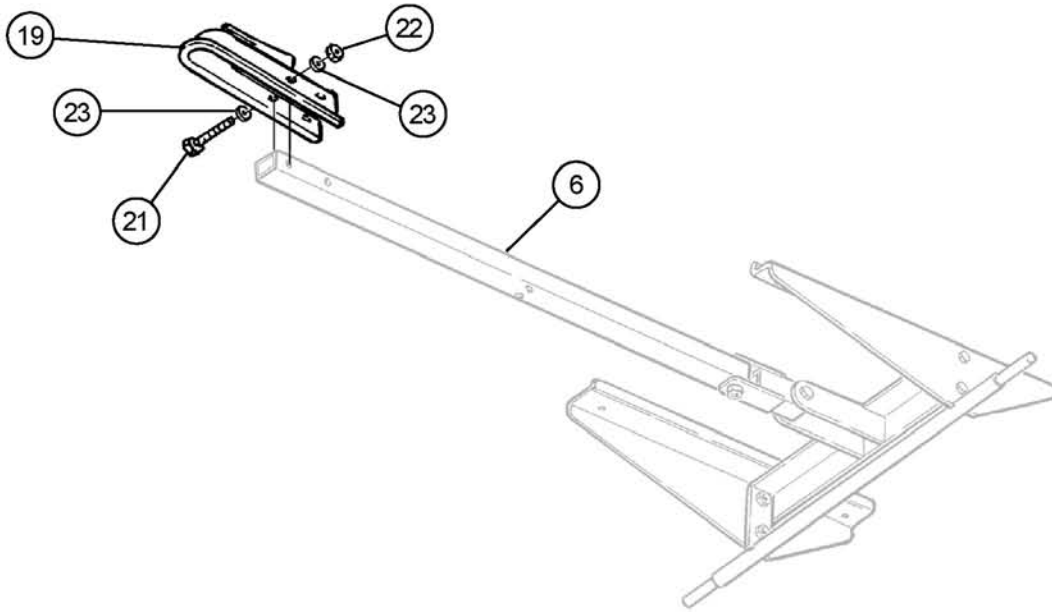
2. Attach the universal pivot (Item 5) to the axle (Item 2) with 3/8 x 3 1/4 bolt (Item 15) and 3/8 nylon lock nut (Item 13).



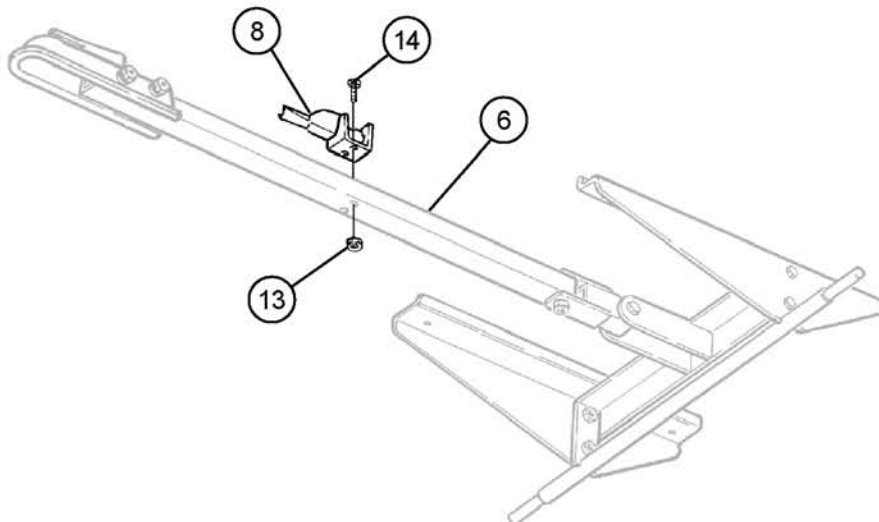
3. Attach the tongue (Item 6) to the universal pivot (Item 5) with 3/8 x 3" bolt (Item 14) and 3/8 nylon lock nut (Item 13).



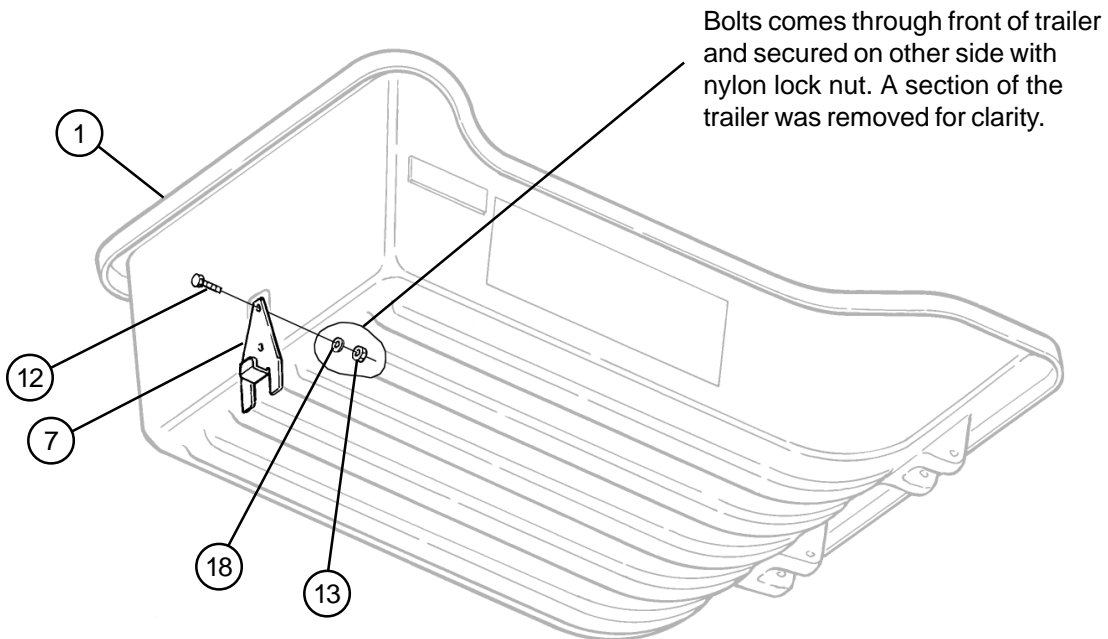
4. Attach the coupler (Item 19) to the tongue (Item 6) with 7/16 x 3 1/4 bolts (Item 21), 7/16 washers (Item 23) and 7/16 nylon lock nuts (Item 22).



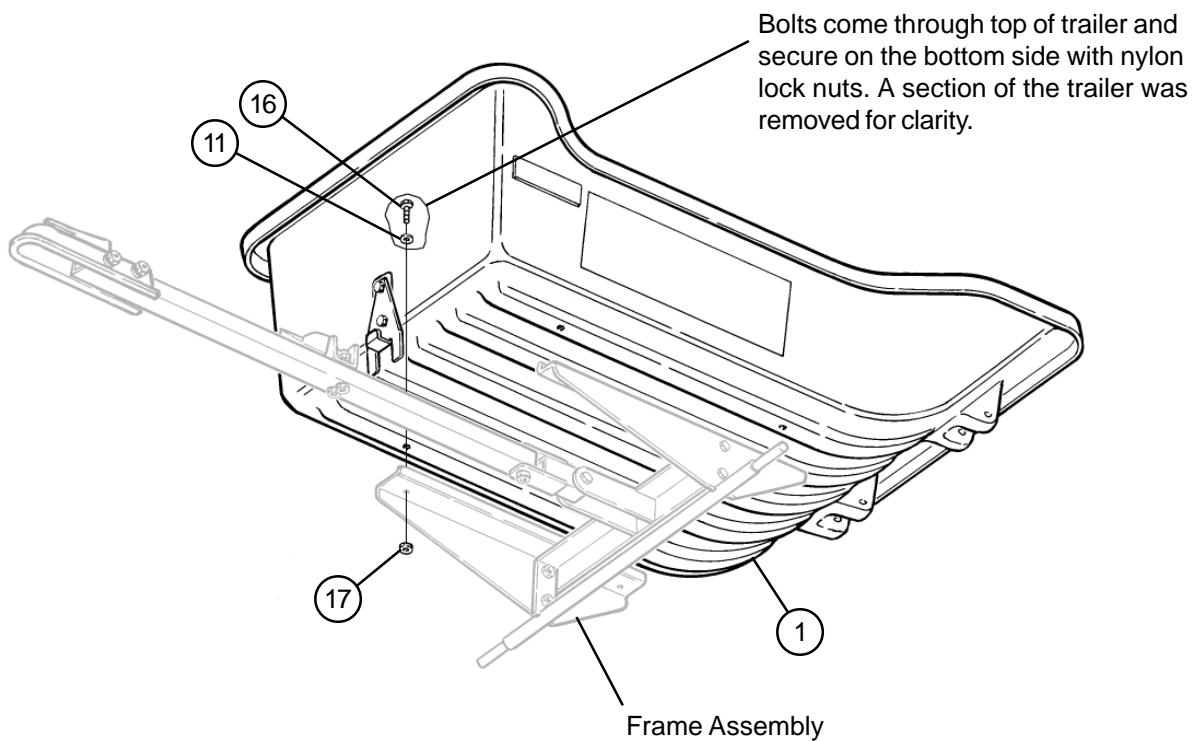
5. Attach the tipper latch (Item 8) to the tongue (Item 6) with 3/8 x 3 " bolts (Item 14) and 3/8 nylon lock nuts (Item 13).



6. Hold up the tipper latch bracket (Item 7) to the front of the trailer (Item 1). Mark the two holes to be drilled. Drill the two holes with 3/8 bit. Attach the tipper latch bracket (Item 7) to the trailer (Item 1) with 3/8 x 1 bolts (Item 12), 3/8 washers (Item 18) and 3/8 nylon lock nut (Item 13).



7. Hold up the frame assembly to the bottom of the trailer (Item 1). Mark the four holes to be drilled. Drill the four holes with 3/8 bit. Attach the frame assembly to the trailer (Item 1) with 5/16 x 1 1/4 bolts (Item 16), 5/16 washers (Item 11) and 5/16 nylon lock nut (Item 17).



8. Slide wheel (Item 9) onto axle (Item 2). Turn castle nut (Item 20) onto axle finger tight. Push cotter pin (Item 10) through slots in castle nut (Item 20) and hole in axle (Item 2). Bend cotter pin (Item 10) over. Do the same for the other side.

