

RHINO

Rhino Xpress 15 Trailer Assembly Instructions

Tools Required:

Ratchet

Extension for ratchet

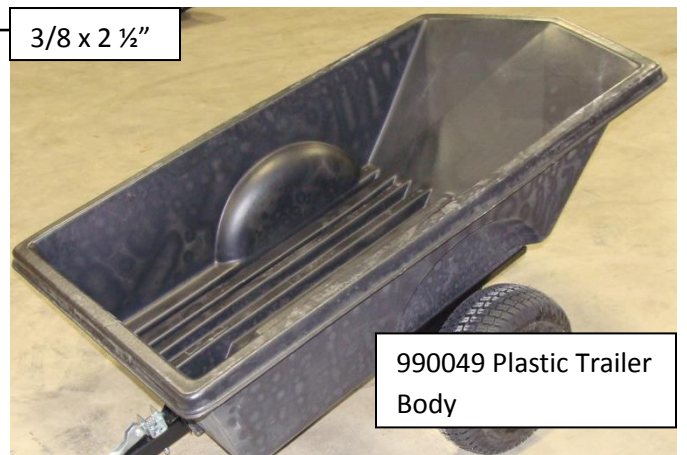
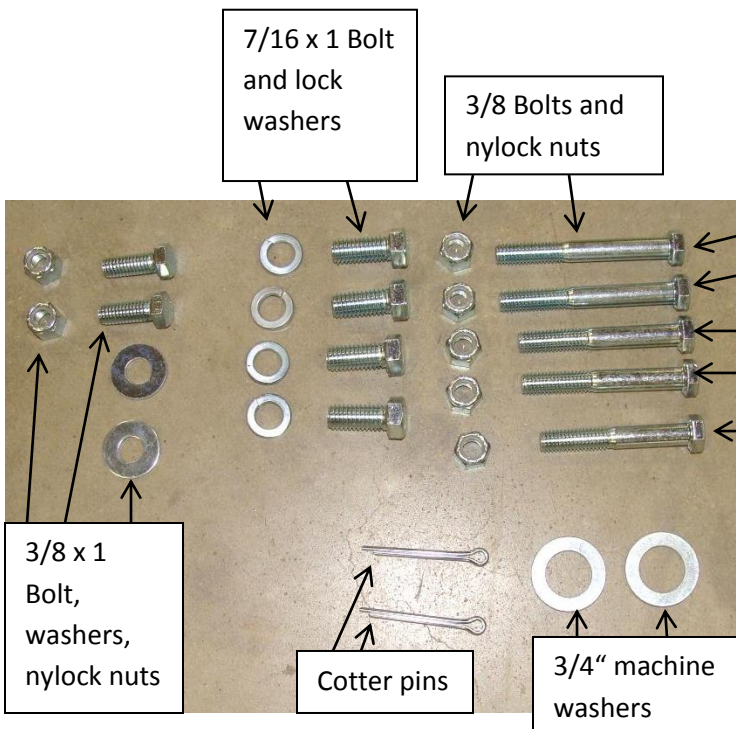
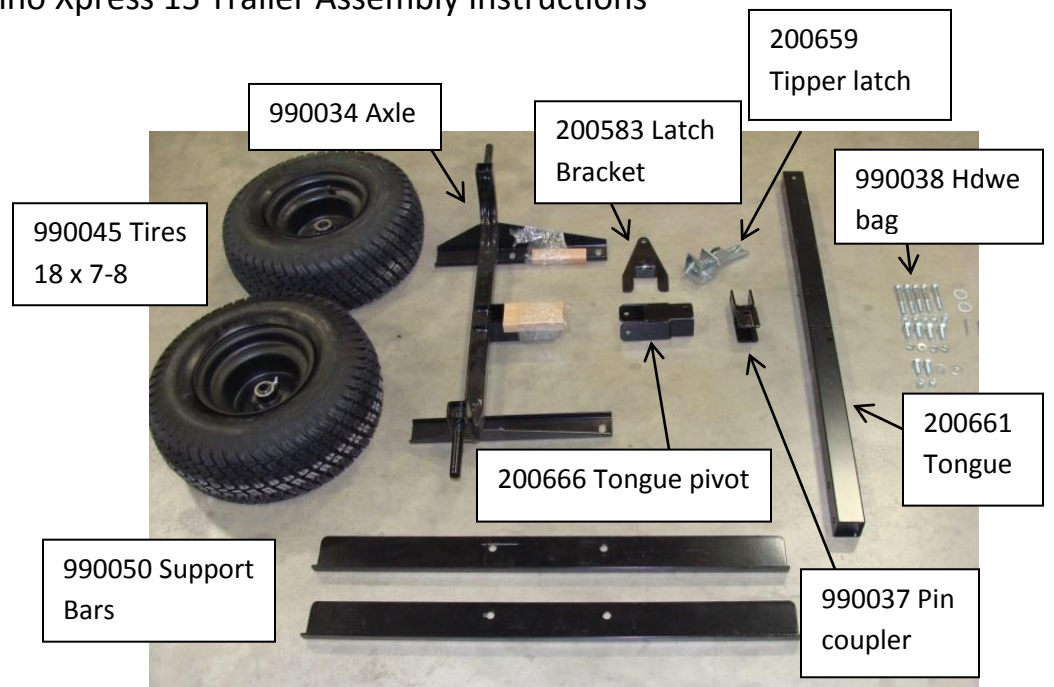
9/16" socket

9/16" wrench

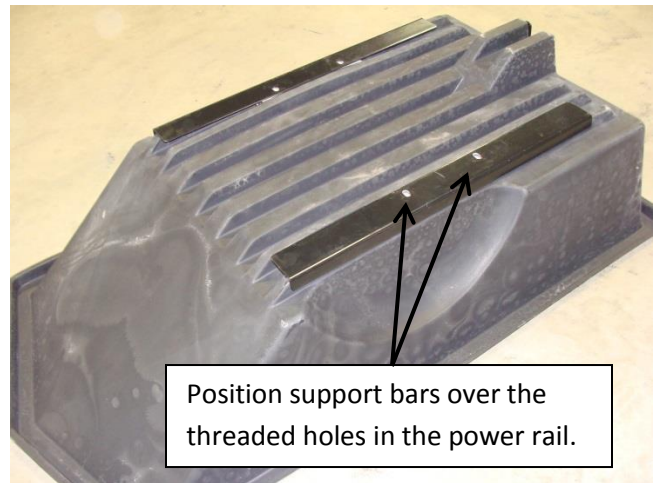
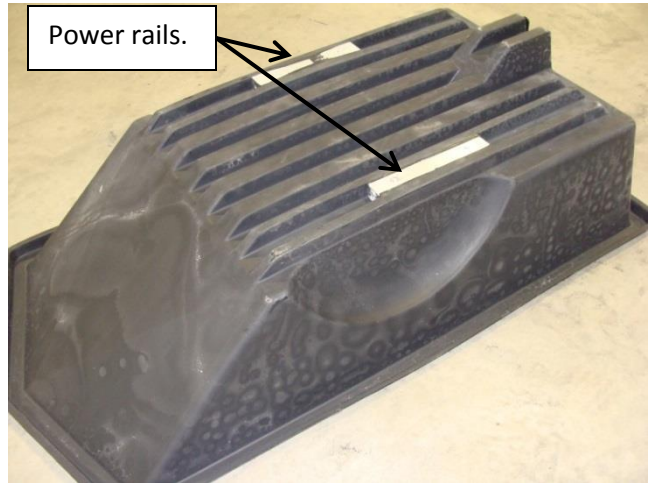
5/8" socket

Pliers

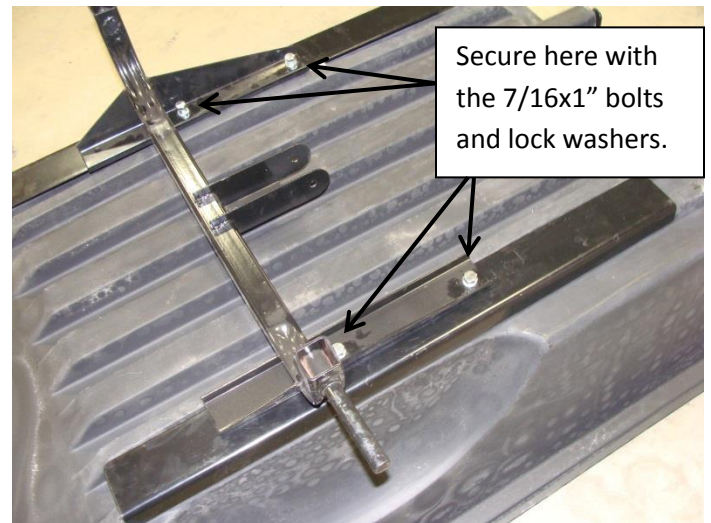
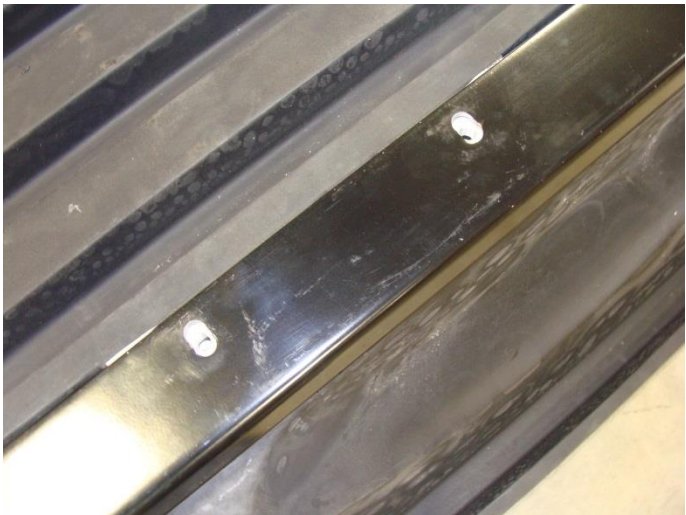
Hammer



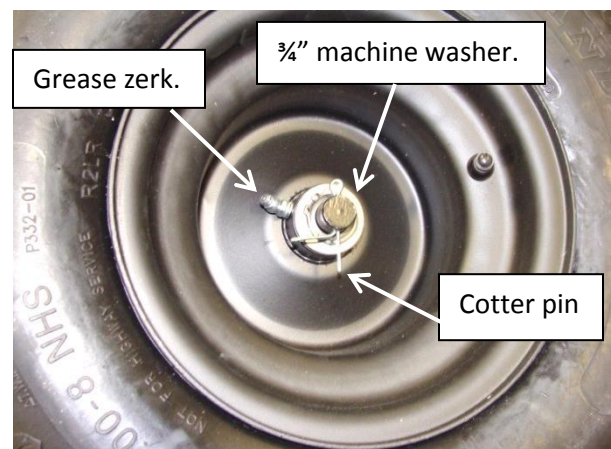
1. Turn trailer body upside down and position support rails over the threaded holes in the aluminum power rails molded into the body.

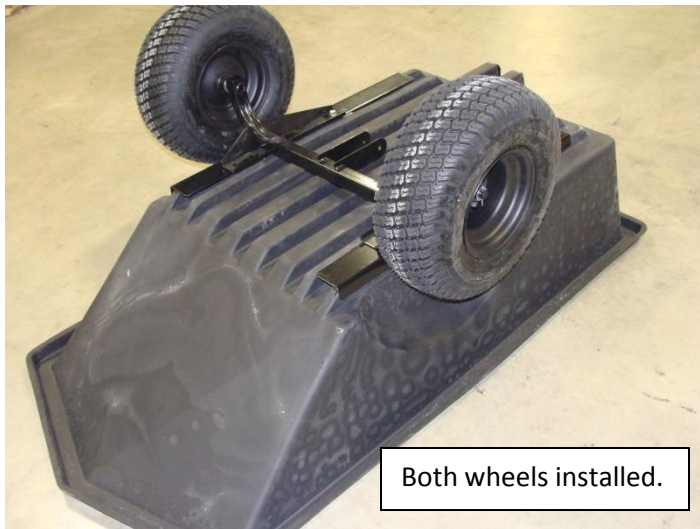


2. **Align** axle with slots in support bars and threaded holes in the power rails. Tighten securely with the 7/16 x 1" bolts and lock washers.

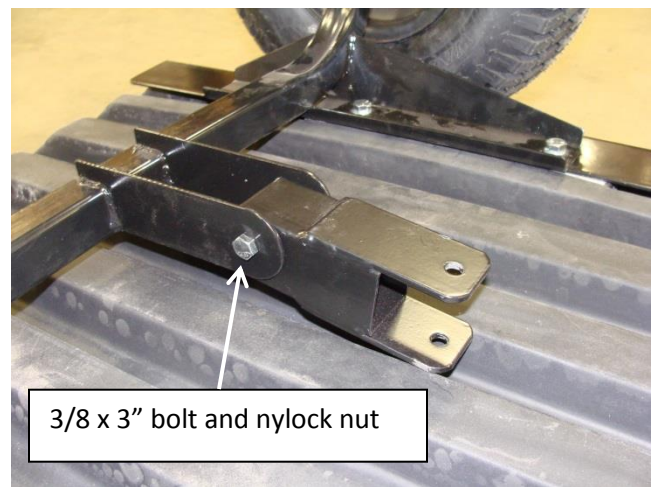
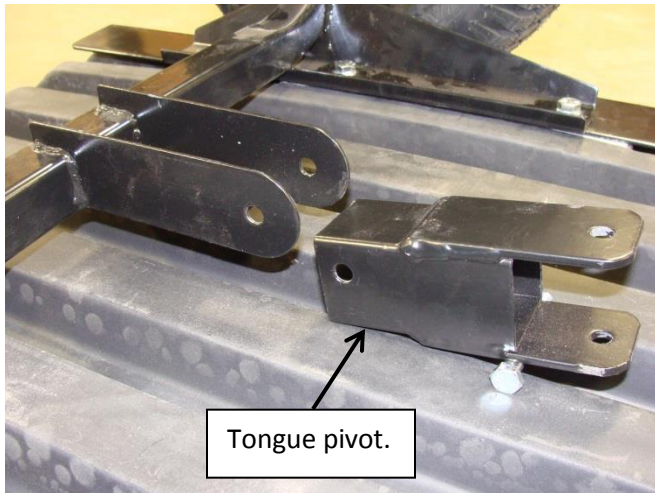


3. Slide wheels onto the axle stub as shown. Grease zerk should be on the outside. Next slide the 3/4" machine washer onto the stub and place the cotter pin thru the hole in the axle stub. Be sure to bend cotter pin over to hold the wheel onto the axle. **Note: Grease before using.**

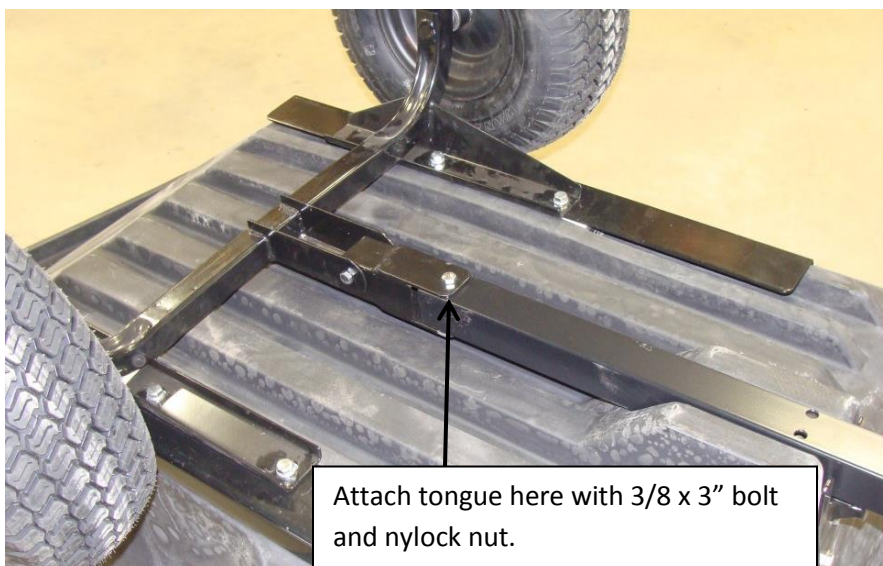




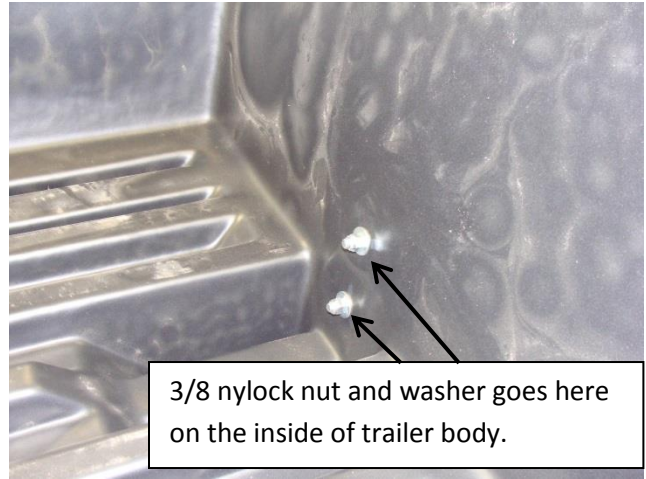
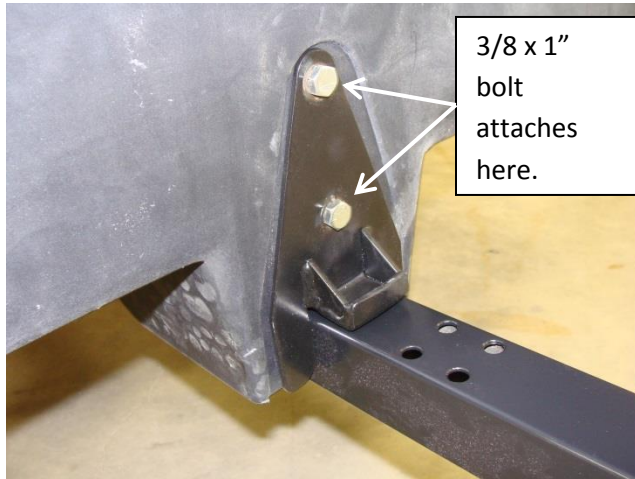
4. Install tongue pivot onto the axle frame as shown. The hole is off center and should be mounted as shown. Secure with the 3/8 x 3" bolt and 3/8" nylock nut. Tighten the nut enough to hold pivot securely yet allow it to freely move with no excess play.



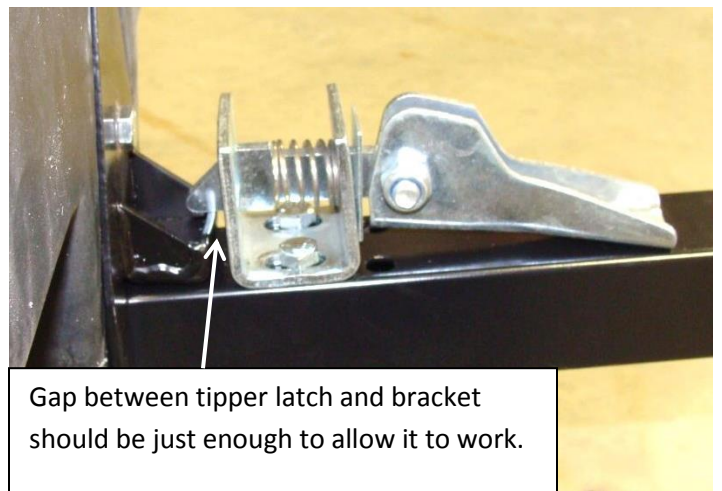
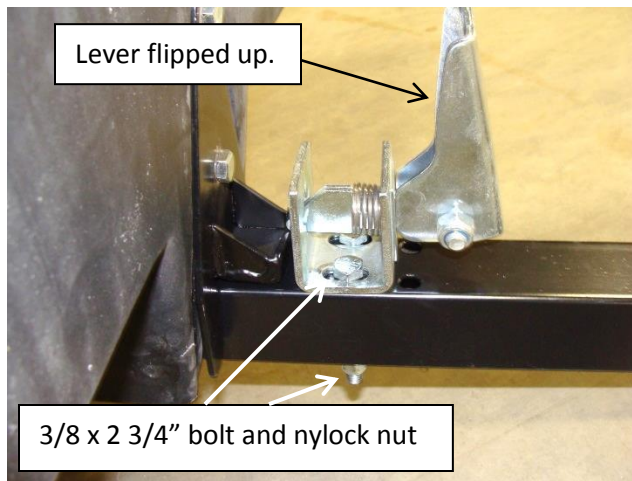
5. Attach tongue to the pivot using the 3/8 x 3" bolt and nylock nut. Tighten the nut enough to hold tongue securely yet allow it to freely move with no excess play.



6. Attach latch bracket to the front of trailer body using the 3/8 x 1" bolts, washers and nylock nuts.



7. Attach tipper latch to the trailer tongue using the middle set of holes in the tongue. Secure with 3/8 x 2 3/4" bolts and 3/8 nylock nuts. Flipping the latch lever up will make it easier to fit a socket onto the bolt. Move the tipper latch in the slots so there is just enough room for the catch to clear the bracket. Tighten securely once the proper mounting position is achieved.



8. Insert pin coupler into the tongue and fasten securely with the 3/8 x 2 1/2" bolt and nylock nut. It may be necessary to tap the pin coupler into place with a hammer.

