



## 201866 Otter Lodge XTR Bench Instructions

**Note: Installing bench before attaching the fish house will make the installation much easier.**

Parts included:

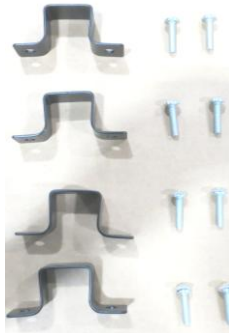
Main support brackets & hdwe



I-beam & hdwe



Tube clamps & hdwe



Backrest support bar brackets & hdwe



Safety latch bracket & hdwe

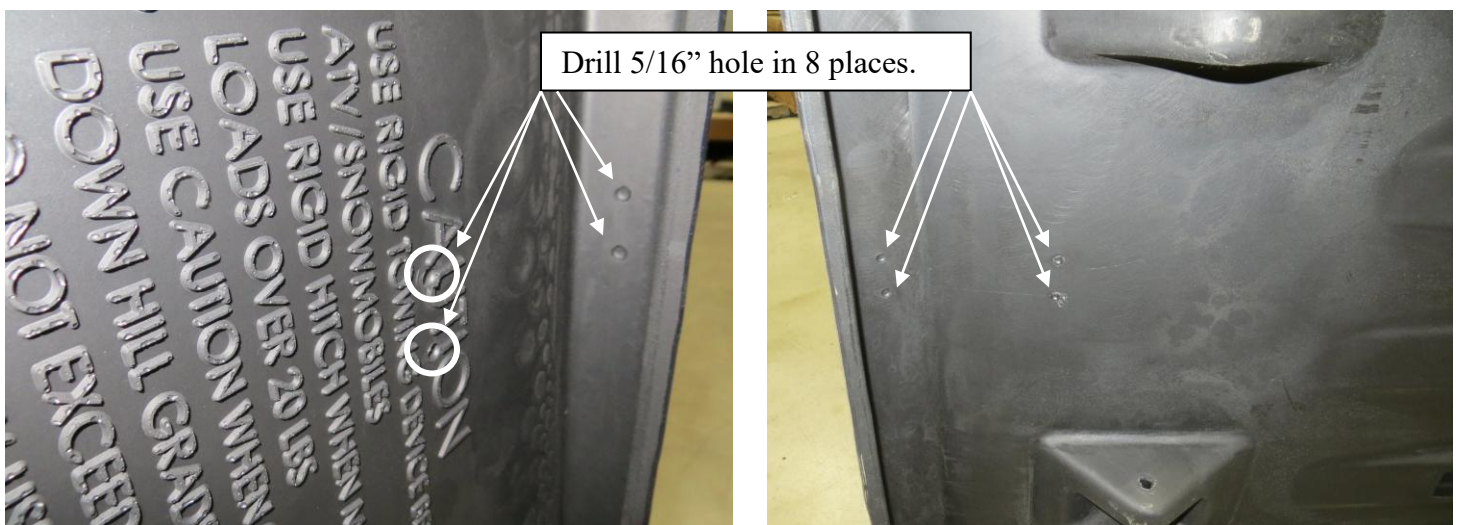


- 1 – Bench
- 1 – Long Support Bar with curved ends
- 1 – Shorter Front Support Bar with curved ends
- 1 – Straight Backrest Support Bar

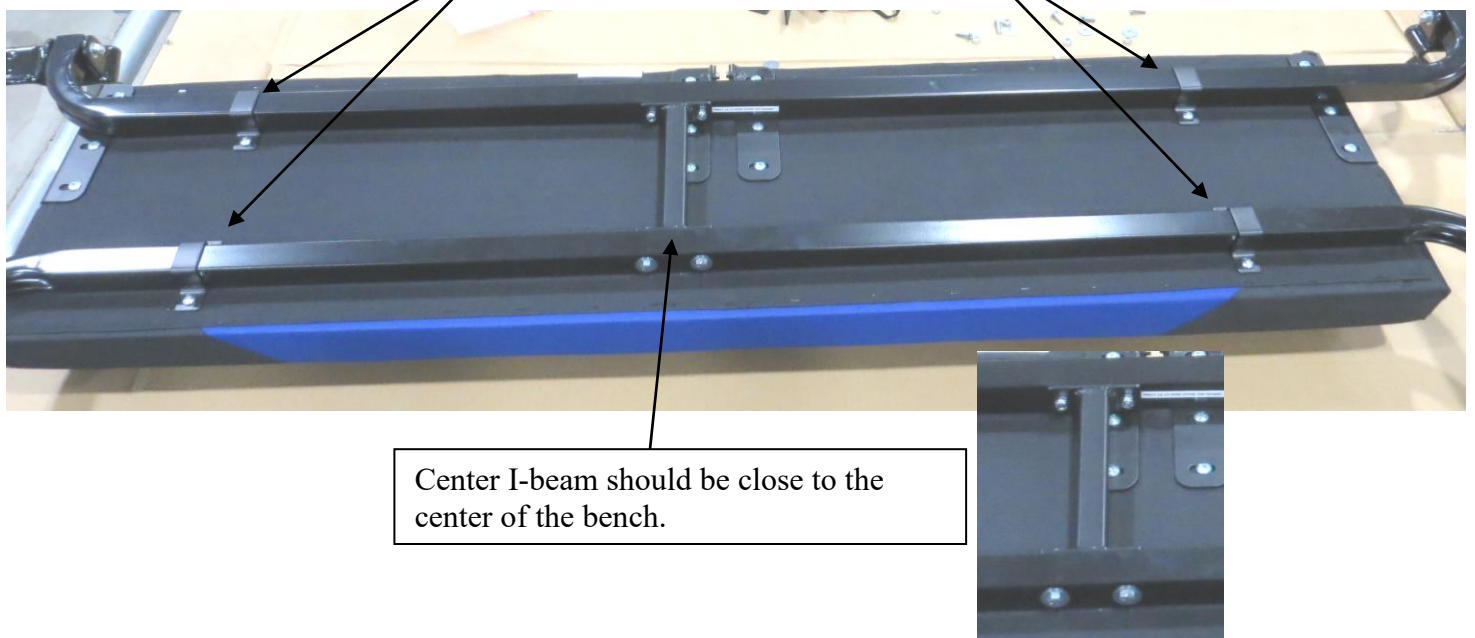
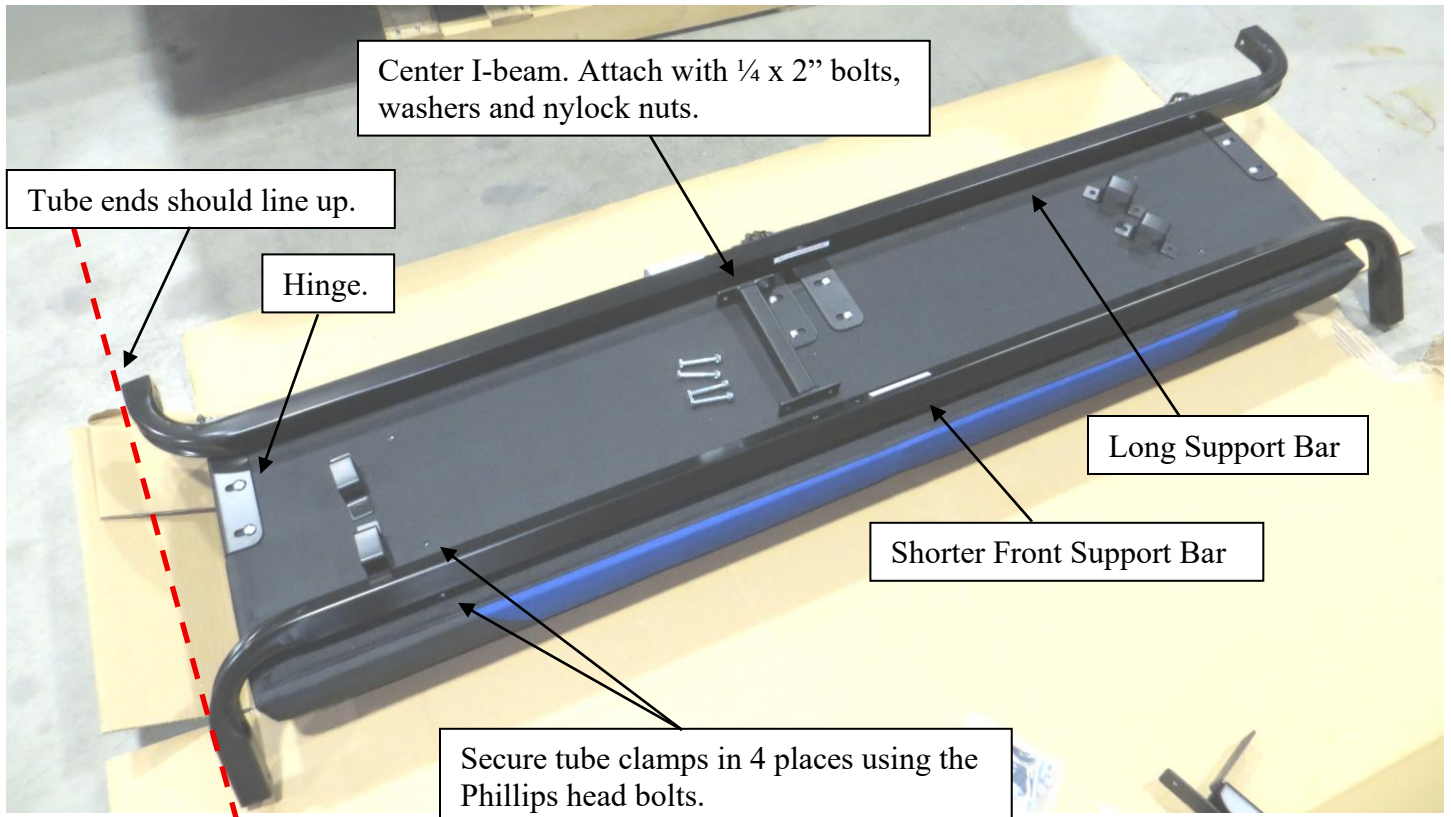
### Tools required:

Drill  
5/16 drill bit  
7/16 wrench and socket with ratchet  
½ wrench and socket with ratchet  
Phillips screwdriver

1. Turn the sled on its side and drill out pre-marked holes at the front of the sled and at the back using the 5/16 drill bit and drill.

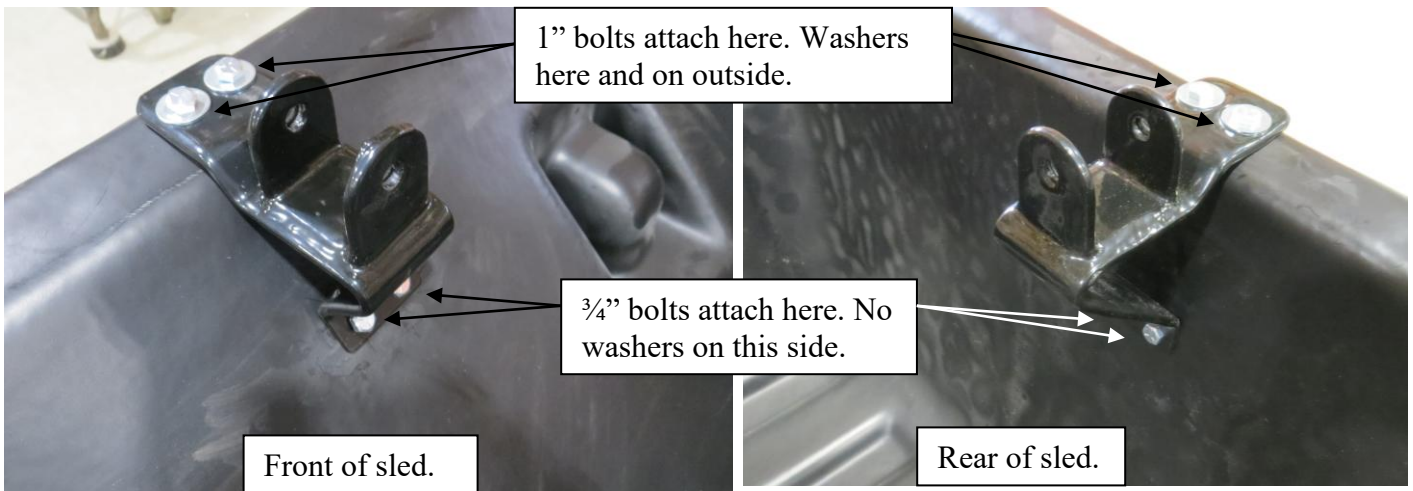


2. Turn bench over so the bottom is facing upward and the hinges are facing away from you. Place the longer curved support bar near the end on the bench. On the left side, line up the edge of the tube so there is about a  $\frac{1}{2}$ " to 1" gap with the inside edge of the seat. There can be some variation. **Note: The center I beam needs to line up with the holes in the support bar near the center as shown below. Rotate both support bars as necessary to achieve this.** Place the tube clamp bracket over the bar and attach with the Phillips head machine screws by threading them into the inserts in the bottom of the bench. Tighten securely.





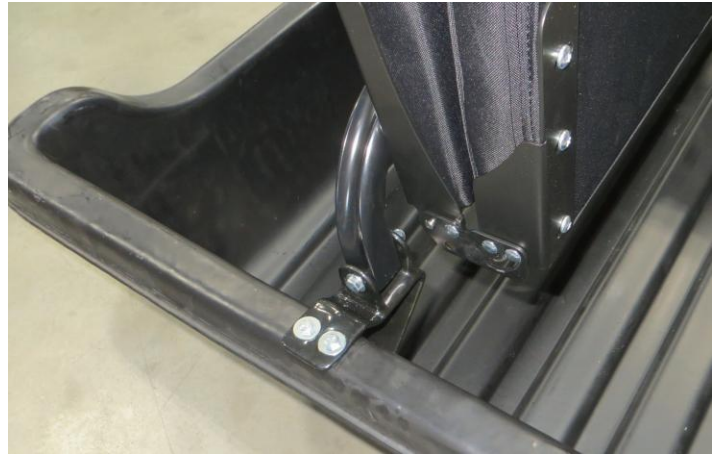
3. Attach main support brackets to the sled as shown below using the holes that were previously drilled. Secure top of brackets with  $\frac{1}{4}$  x 1" bolts, washers, and nylock nuts. Secure bottom of brackets with  $\frac{1}{4}$  x  $\frac{3}{4}$ " bolts, washers and nylock nuts.



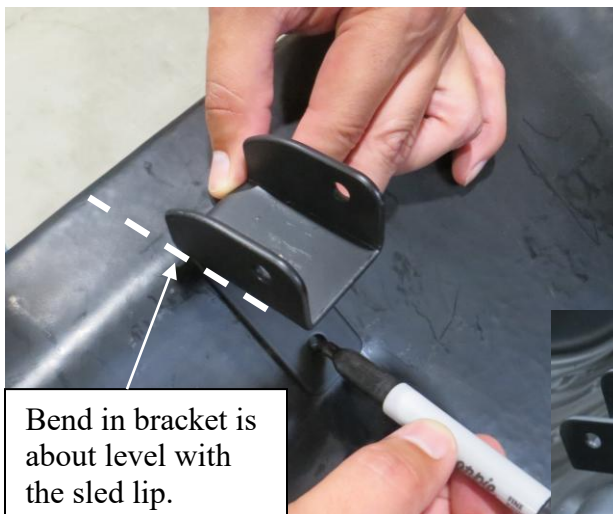
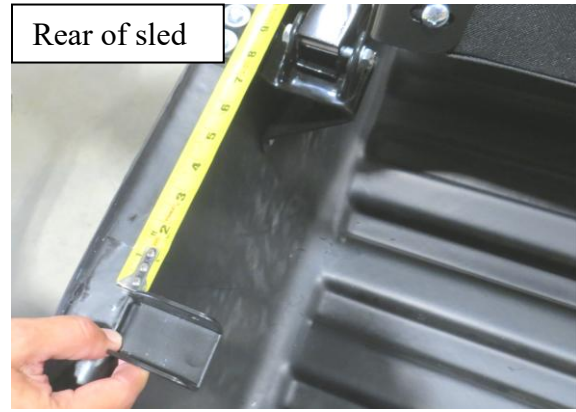
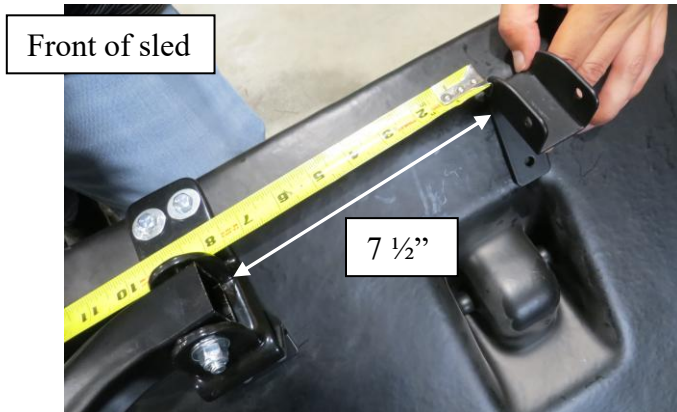
4. Place bench onto the support brackets as shown below.



5. Insert 5/16 x 2 ½ bolts through the bracket and support bar. Rotate bench upward to fit the bolt through the final hole. If necessary use the drill to enlarge the holes. Repeat for other end.

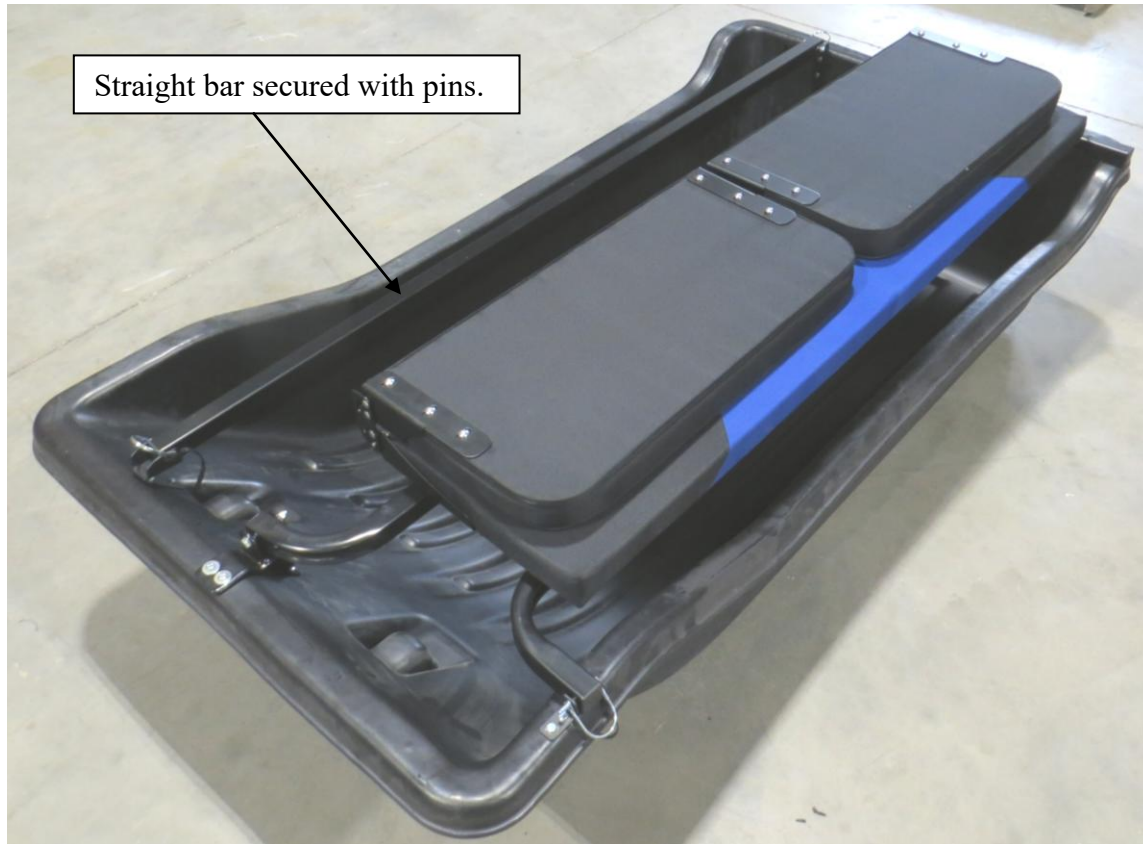


6. These holes may already be drilled or there may be pre-marked drill points. Place headrest support bar brackets 7 ½" from the main support brackets. Bracket bend should be about level with the top edge of the sled. Mark the holes for the bracket both at the front and the rear of the sled. Drill out the 4 marked holes with the 5/16" drill bit. Place fabric loop, attached to the pin, over the bracket to keep it attached. Secure brackets with ¼ x ¾" bolts, washers and nylock nuts.





7. Place straight backrest support bar into the two brackets just installed and secure with the pins.



8. Attach safety latch bracket to front of sled as shown below. This will keep the bench (when it is folded flat) from tipping into the sled if the backrest support bar is not attached. Place bracket next to the hole in the end of the tube. Place pin through hole in bracket and tube. Mark the two holes and drill out using the 5/16" drill bit. Place loop in fabric strap over the bracket. Secure with the 1/4 x 3/4" bolts, washers and nylock nuts.



9. Each backrest may be operated independently. To adjust the backrest, pull the release cable and move the backrest. **Note: The cable needs to be pulled each time the backrest is adjusted, or it will get out of sync.** If this happens pull the cable and fold the backrest all the way forward. It can then be moved to the upright position and will operate normally.

