



Hideout XT

Installation and Set-Up Instructions

Hideout XT

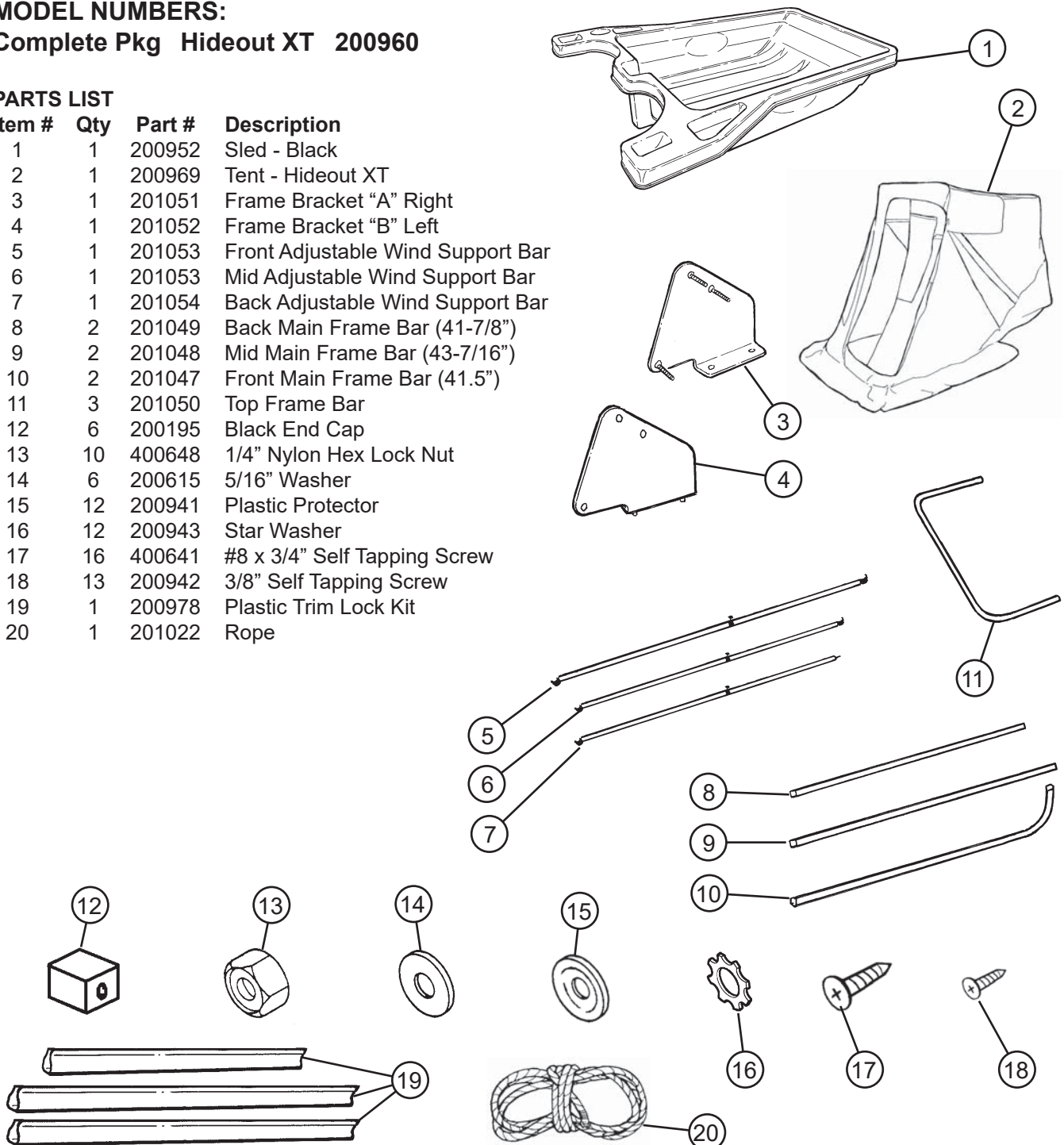
Fits One Man Hideout Sled Only

Parts Identification and Check List

MODEL NUMBERS:
Complete Pkg Hideout XT 200960

PARTS LIST

| Item # | Qty | Part # | Description |
|--------|-----|--------|-----------------------------------|
| 1 | 1 | 200952 | Sled - Black |
| 2 | 1 | 200969 | Tent - Hideout XT |
| 3 | 1 | 201051 | Frame Bracket "A" Right |
| 4 | 1 | 201052 | Frame Bracket "B" Left |
| 5 | 1 | 201053 | Front Adjustable Wind Support Bar |
| 6 | 1 | 201053 | Mid Adjustable Wind Support Bar |
| 7 | 1 | 201054 | Back Adjustable Wind Support Bar |
| 8 | 2 | 201049 | Back Main Frame Bar (41-7/8") |
| 9 | 2 | 201048 | Mid Main Frame Bar (43-7/16") |
| 10 | 2 | 201047 | Front Main Frame Bar (41.5") |
| 11 | 3 | 201050 | Top Frame Bar |
| 12 | 6 | 200195 | Black End Cap |
| 13 | 10 | 400648 | 1/4" Nylon Hex Lock Nut |
| 14 | 6 | 200615 | 5/16" Washer |
| 15 | 12 | 200941 | Plastic Protector |
| 16 | 12 | 200943 | Star Washer |
| 17 | 16 | 400641 | #8 x 3/4" Self Tapping Screw |
| 18 | 13 | 200942 | 3/8" Self Tapping Screw |
| 19 | 1 | 200978 | Plastic Trim Lock Kit |
| 20 | 1 | 201022 | Rope |



Tools required for seat and support brace installation:

Ratchet & 10mm socket

10mm wrench

7/16 socket

7/16 wrench

Drill/Driver

½" Wrench

½" socket

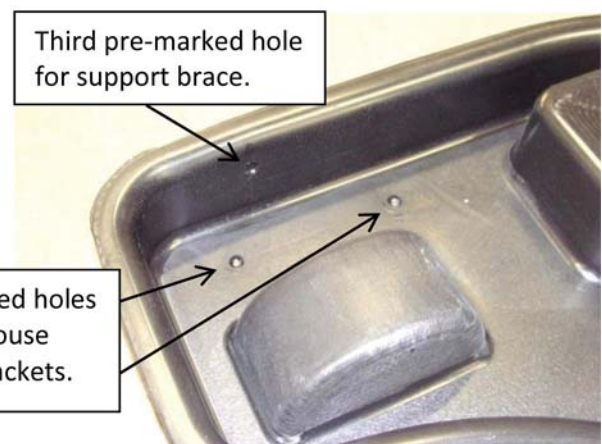
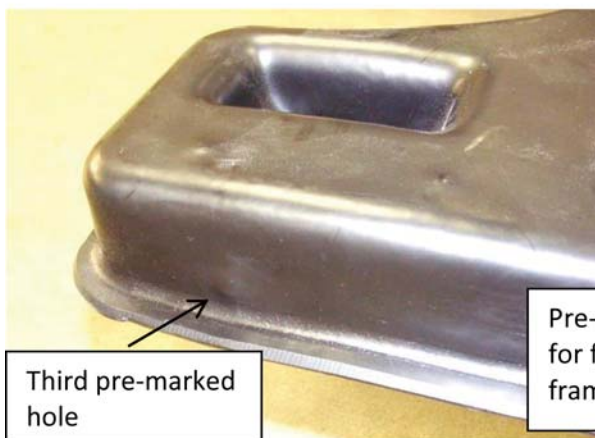
5/16" Drill Bit

Installing the seating system before assembling the frame and canvas will make installation easier.

1. Locate the three pre-marked holes near each wing for the support brace. Turning the sled upside down will make finding them easier.



Sled turned upside down.

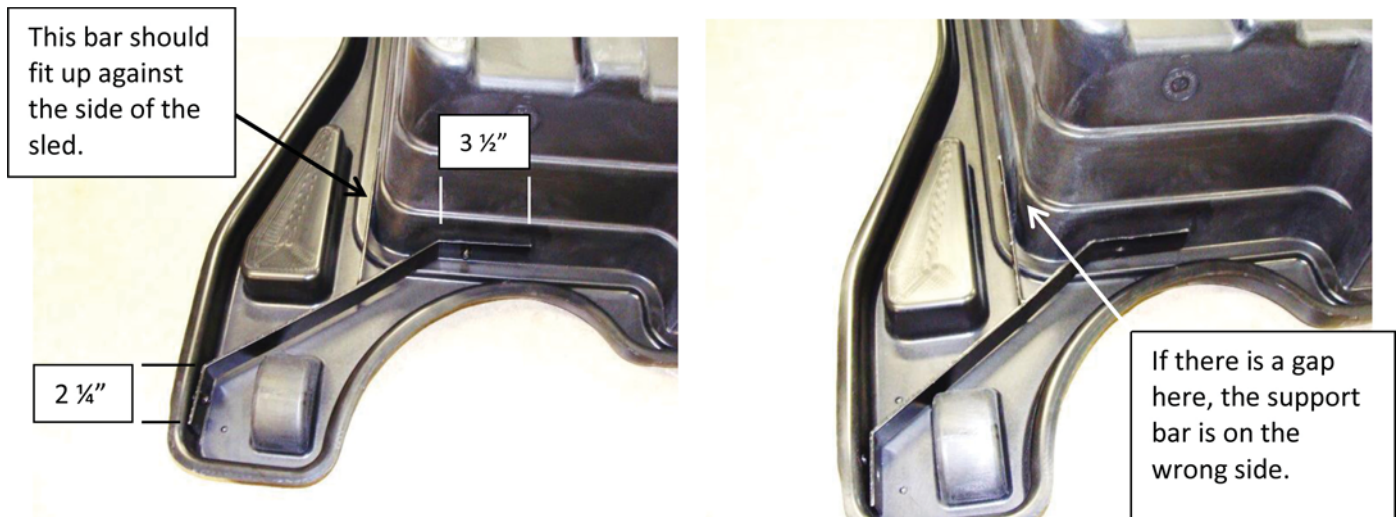


Sled turned upside down.

2. Drill out the six pre-marked holes (3 for each wing) as shown using a 5/16" drill bit.



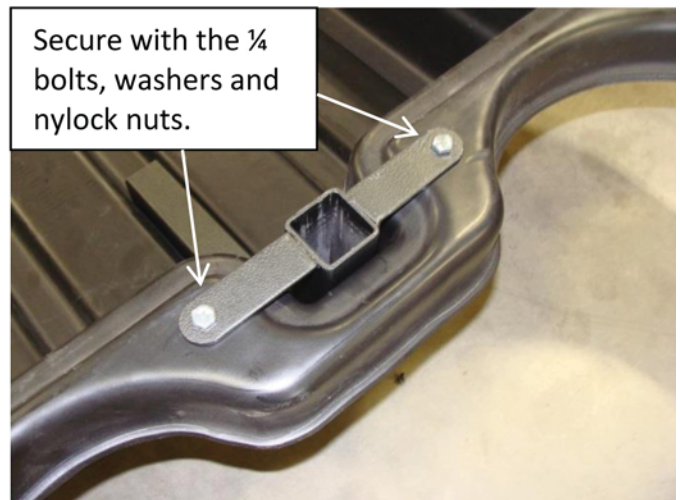
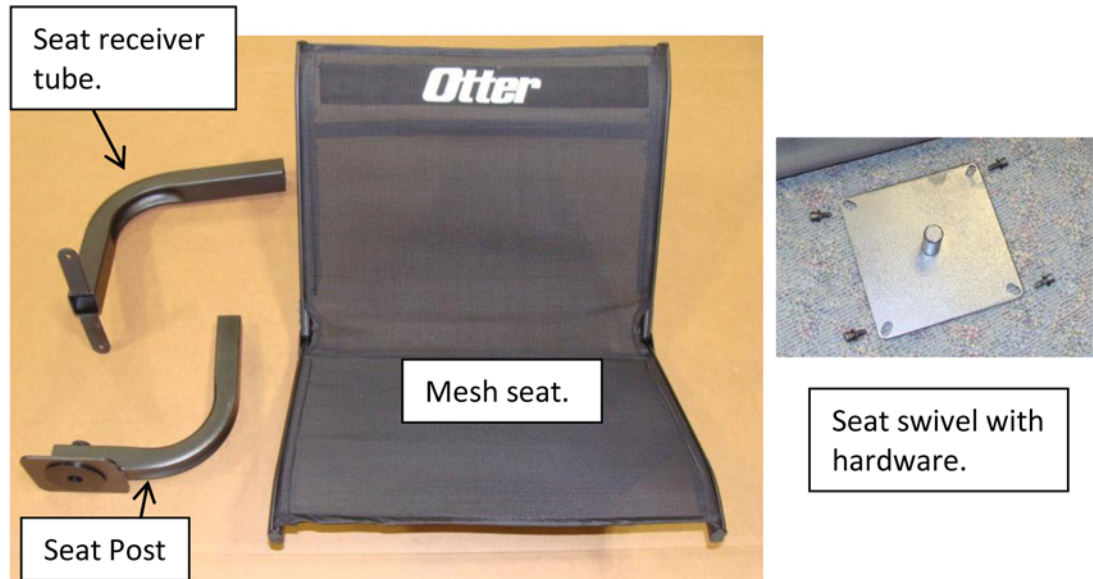
3. Turn the sled upside down and fit the support brace to the sled as shown. There is a left and a right brace. The brace should fit close to the side of the sled.



4. Insert black bolts into all three holes. Once the bolts are all installed they may be tightened using the washers and the nylock nuts. The holes in the plastic may be slotted if necessary to get the bolts to line up with the holes in the brace. Repeat on other side.



5. Position sled as shown. Insert the seat receiver tube into the cutout area on the sled. Press down and in on the tube and mark the two holes in the top bracket with a marker or sharp object. Drill out the two marked holes and secure with the $\frac{1}{4}$ x $\frac{3}{4}$ bolts, washers and nylock nuts.



6. Drill through the sled using the lower hole in seat receiver tube as a guide. Use a 5/16 drill bit for this. Hole in plastic may need to be enlarged slightly to fit bolt through. Secure with the 5/16 x 2 1/4" bolt, washer and nylock nut.



7. Attach seat swivel to bottom of seat using the allen head screws and washers with the supplied wrench.



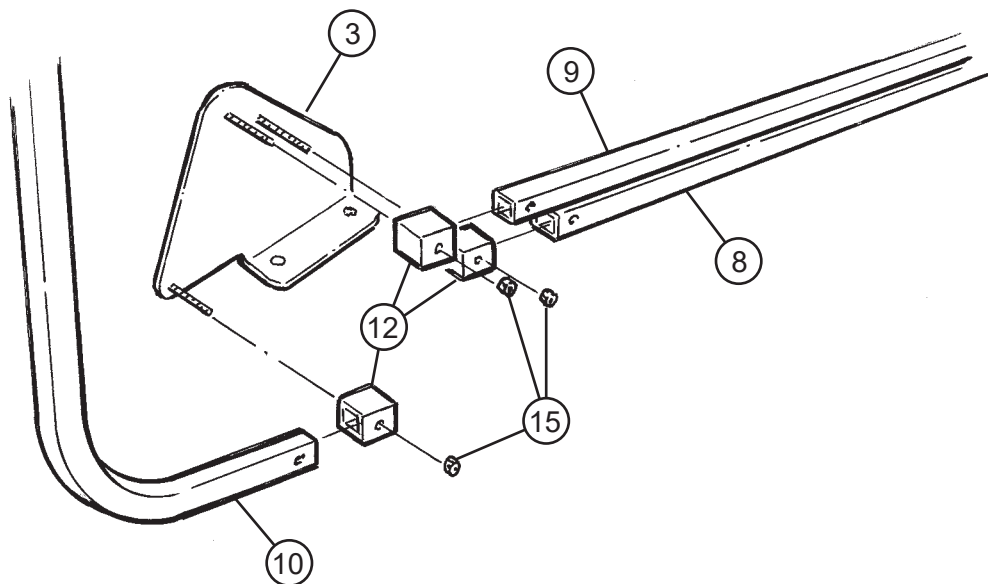
8. Insert seat post into receiver tube and then insert the seat onto the seat post. Lubricating the seat post and tube will allow it to slide in and out easier.



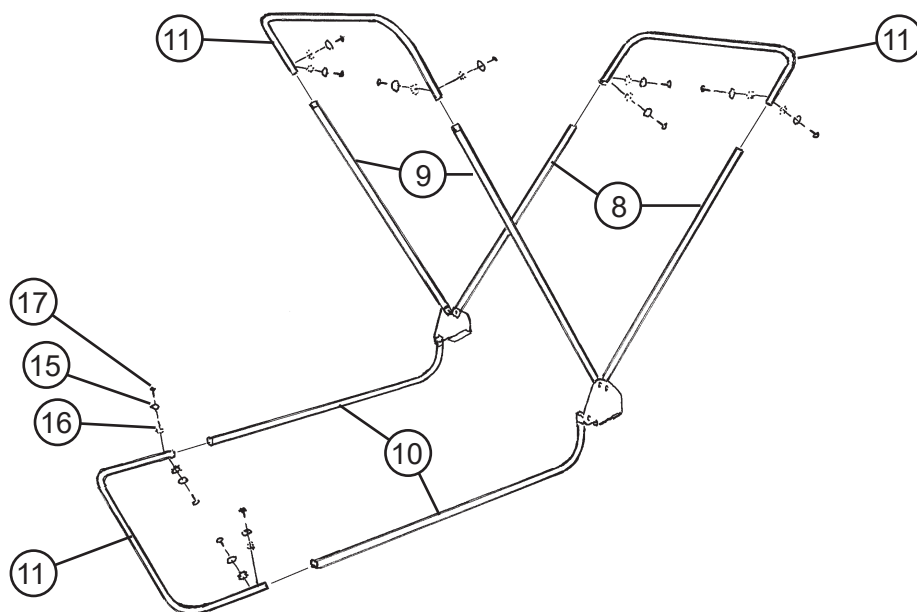
Tools Required:

7/16" Box End Wrench
7/16" Socket and Ratchet
Drill/Driver
Phillips Bit

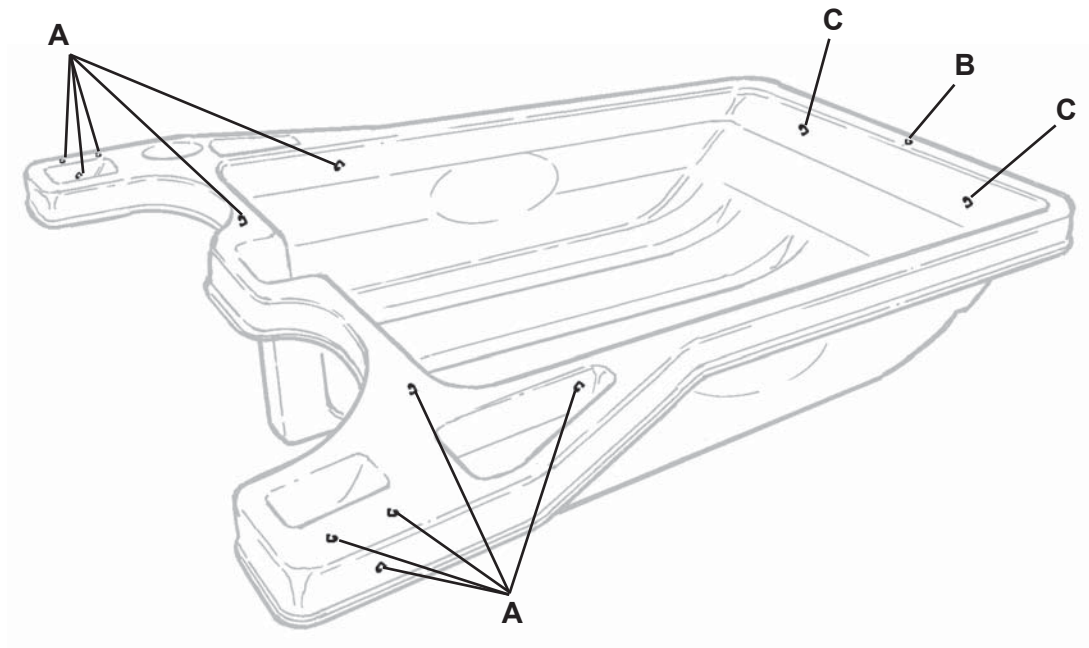
1. Insert black end caps (Item 12) onto the ends of the back main frame bar (Item 8), the mid main frame bar (Item 9), and the front main frame bar (Item 10). Position frame bracket "A" (Item 3) as shown and insert the back, mid, and front main frame bars onto the threaded studs on the frame bracket "A" (Item 3). Install a 1/4" nylon hex lock nut (Item 13) on each threaded stud. Repeat procedure for the opposite side using the frame bracket "B".



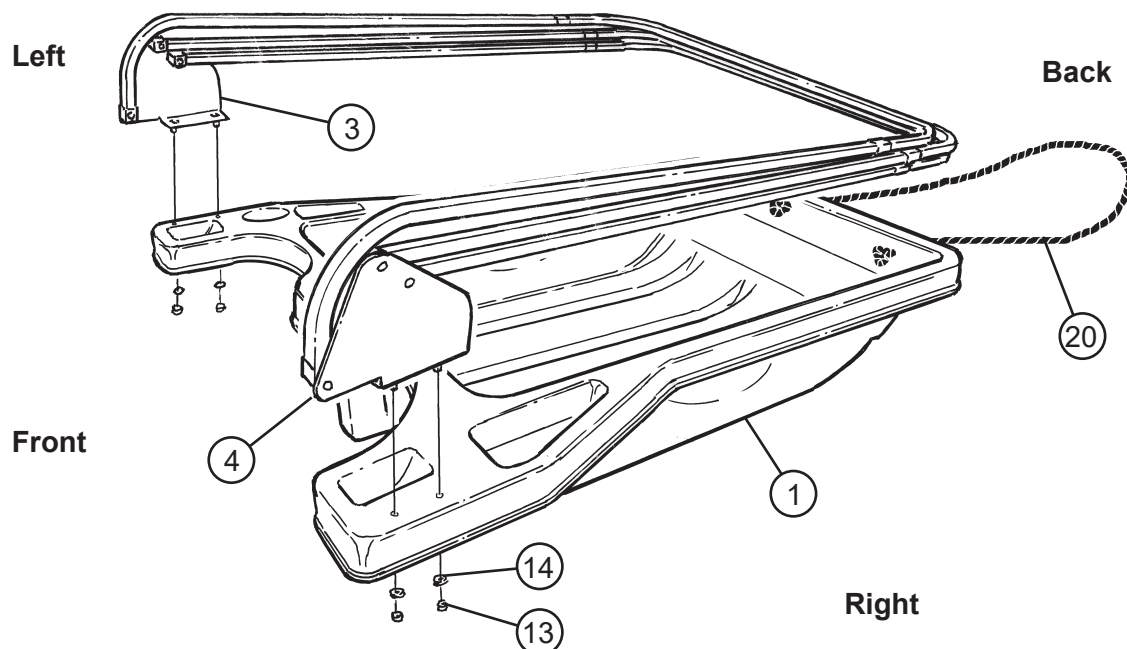
2. Assemble the top frame bars (Item 11) onto the main frame bars (Items 8, 9, and 10). Fasten together with plastic protectors (Item 15), star washers (Item 16), and #8 x 3/4" self tapping screws (Item 17). Do not overtighten as the threads in the aluminum may get stripped out.



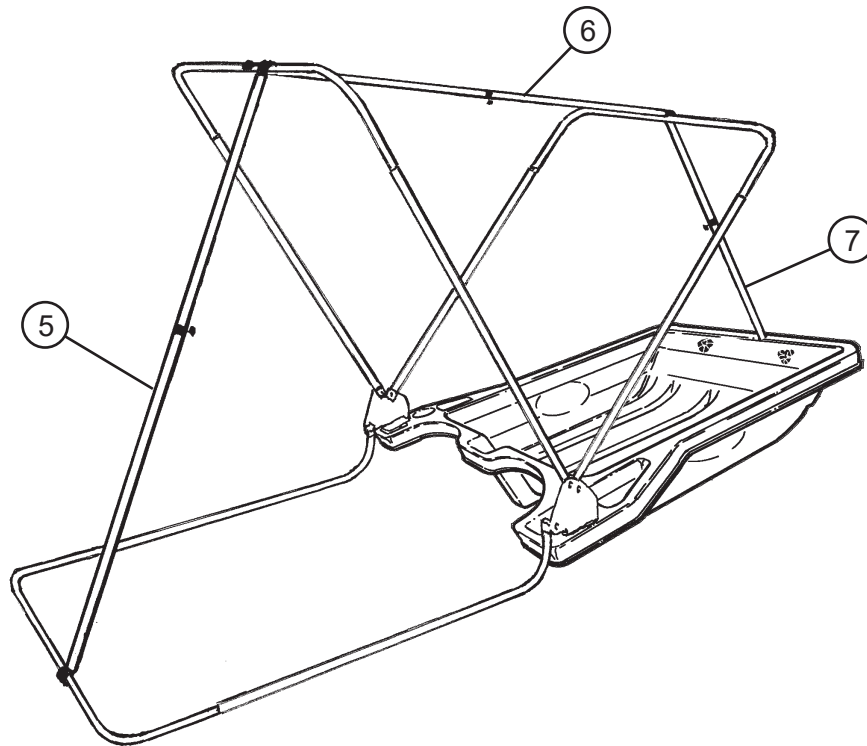
3. Drill out the premarked holes on the sled. Drill the 10 holes (A) with a 5/16" drill bit. Drill the 1 hole (B) with a 7/16" drill bit. Drill the 2 holes (C) with a 3/8" drill bit. The holes for the brackets (Items 3 and 4) can be drilled from underneath the sled.



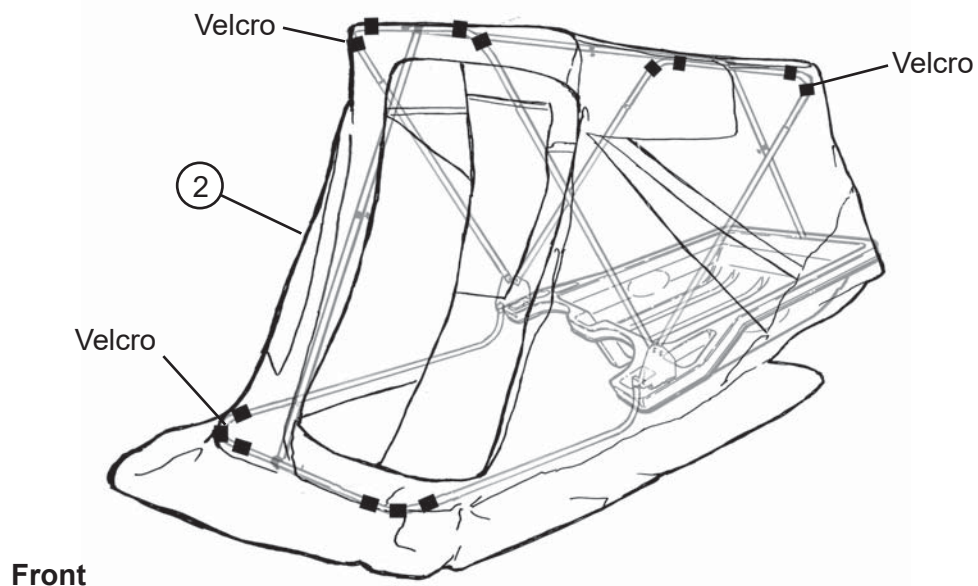
4. Position sled as shown. Assemble the frame bars onto the sled (Item 1) by lining up the threaded studs in the frame brackets (Items 3 and 4) with the drilled holes in the sled. Install 5/16" washers (Item 14) and 1/4" nylon hex lock nuts (Item 13) onto the threaded studs. Attach rope (Item 20) to back of sled.



5. Install front adjustable wind support bar (Item 5), mid adjustable wind support bar (Item 6), and back adjustable wind support bar (Item 7). Insert the round peg on the back adjustable wind support bar into the drilled hole in the sled.



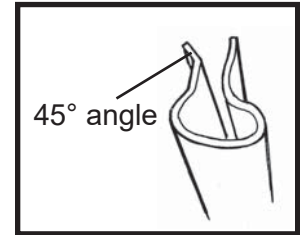
6. Slide the tent (Item 2) over the frame assembly with the door facing the front. Fasten the velcro strips on the inside of the tent to each main frame bar at all locations shown. Extend the front adjustable wind support so that it is tight enough that the tent is not sagging. Extend the mid adjustable wind support next and then the back adjustable wind support bar to fully support the tent.



7. Attach the trim lock at the rear of the shelter first with the 45 degree angled edge to the inside of the tent. The front main frame pole should rest on the ground and the canvas should fit slightly loose on the frame.



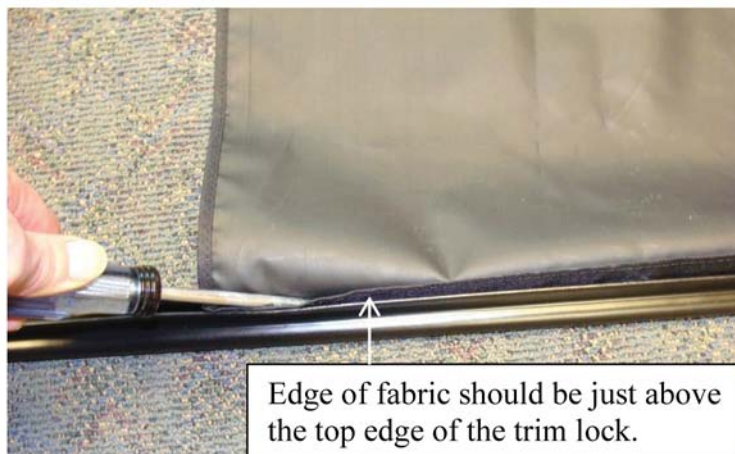
Trim lock installed
at back of shelter.



8. Lay the side trim lock pieces on a flat surface so the opening is facing upward and the outside face is towards you. Lay fabric skirt extension over the top of the trim lock and 1-2 inches from the end as shown. The inside coated surface should face upward.



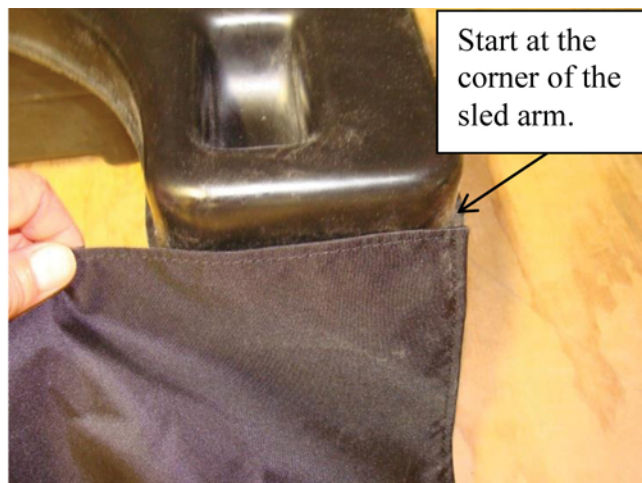
9. Use a Phillips screwdriver to push the fabric down into the opening of the trim lock.



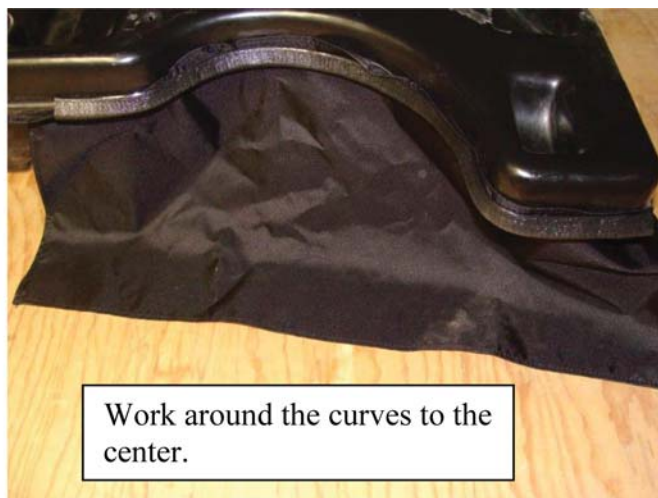
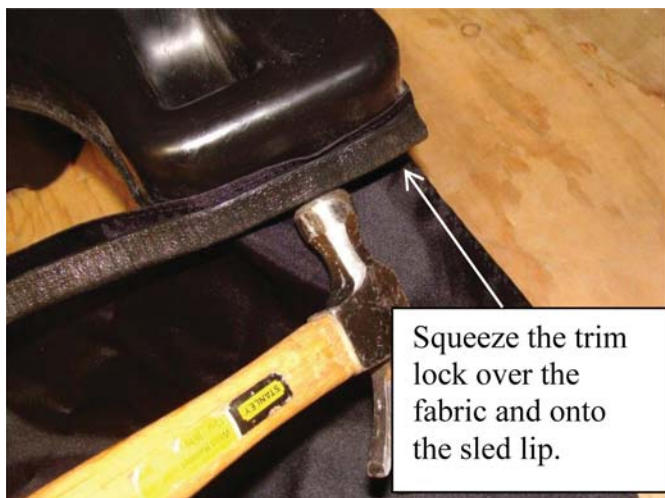
10. Attach trim lock with skirt extension over the existing skirt and shelter fabric and onto the lip of the sled. Secure with the screws that came with the trim lock kit after all of the trim lock is installed and the canvas fits properly on the frame.



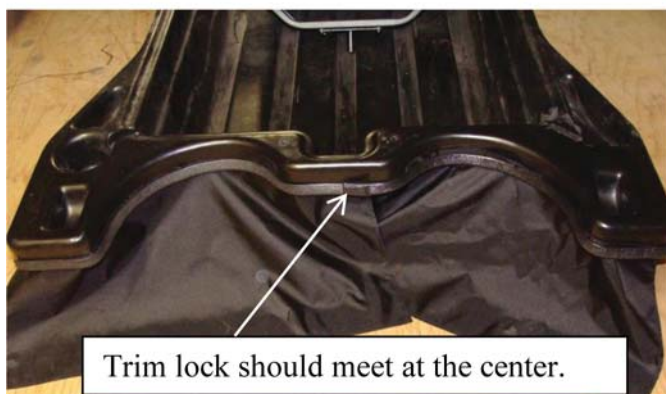
11. Optional inside front skirt. There are two skirt pieces that may be attached on the inside of house. Start at the corner of the sled arm using the trim lock to secure the fabric skirt to the sled. **Note:** Trimlock will install much easier at room temperature when it is more flexible.



12. Use your fingers and hands to squeeze the trim lock onto the sled lip. If necessary the trim lock may be tapped into place with a hammer or mallet. Work your way through the corners and curves to the center. **Secure with screws that came with the trim lock kit.**



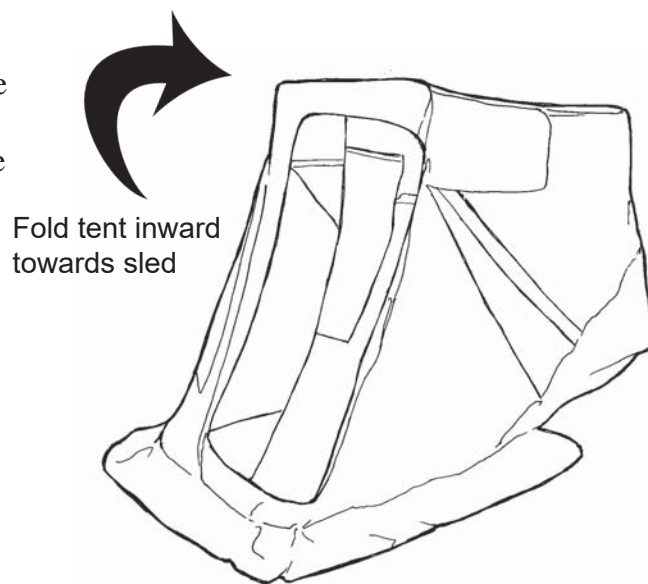
13. Repeat on the other side. The trim lock should meet in the center and the fabric should overlap slightly. Secure with screws.



To collapse tent and transport:

1. Collapse and remove the wind support bars and store inside the sled.
2. Fold the tent in towards the sled so all of the bars are resting on the sled.
3. Tuck in excess material.
4. Prepare fish house for transport.

Note: Use care with tent windows in cold weather, as creasing or crushing them will cause breakage.



Caution: Use adequate ventilation. Portable heaters use up oxygen and emit carbon monoxide. Use reflectors and identifying lights after dark or during limited visibility.



Fish House Fabric Use and Care Guide

Care must be taken during use to avoid damaging the fabric. Follow these guidelines to help protect the fabric. The warranty will not cover damage to the fabric because of wear, improper packing or abuse.

1. Do not pack any gear on top of the fabric. Propane tanks and augers can be especially damaging because of the sharp edges and the extra weight associated with them.
2. When folding up the framework do not allow the fabric to be pinched between the hinge brackets and the frame poles.
3. Do not allow the fabric to be trapped between gear that is in the sled and the sled bottom. Gear that is sitting on top of the fabric will damage it due to vibration and impact.
4. Do not allow the fabric to come in contact with the heater or operate the heater too close to the fabric. The fabric can melt or the coating may be compromised from the heat.
5. When towing the fish house behind an ATV or snowmobile extra care must be taken because of the extreme amount of vibration and jarring that can occur. Padding or foam may need to be placed between the poles to protect the fabric. Any hard or sharp edge can damage the fabric if it is not padded or protected in some manner.
6. Do not pull on fabric that is frozen into the ice. This may damage the fabric or cause a seam to fail. Use a chisel to chop around the fabric to free it.
7. The fabric may be cleaned with warm water and a mild detergent if needed.
8. Always dry out the fabric after use and before storing.

By taking a few precautions to protect and maintain the fabric it will provide years of service.